



**West Central Regional Center  
Quarterly Report – October-December 2010**

Jeff Moates, Director  
Rae Harper, Outreach Coordinator  
Zaida Darley, Outreach Specialist  
Becky O’Sullivan, Graduate Student Assistant

Executive Summary

In the second quarter (October-December) of 2010-11 fiscal year, West Central Regional Center (WCRC) staff participated in 42 various outreach events/presentations and attended 12 meetings with regional partners in the preservation, education, and government sectors.

Quarter highlights for WCRC staff include: attendance and participation at two statewide educator conferences; coordination of and participation in the Public Archaeology Interest Group forum at the Southeastern Archaeological Conference (SEAC) in Lexington, KY; meeting with Cathy Slusser, deputy supervisor of Manatee County Historical Resources Department, and Michael Gallen, Manatee County Commissioner, to discuss potential for establishing an Historic Preservation Ordinance in Manatee County; lastly, participation in public meeting for the proposed Florida Shipwreck Preserve, USS *Narcissus*.

In late October and early November, WCRC outreach coordinator, Rae Harper, along with other FPAN staff attended and participated in two statewide educator conferences, the **Florida Conference for Social Studies (FCSS)** and the **Florida Association of Media Educators (FAME)**. Beyond just attending, Rae participated in the presentations and outreach activities put forth by FPAN. Also in November, Rae attended – along with several other FPAN staff – the annual **SEAC** meetings in Lexington, KY. Together with Gwynn Henderson (Kentucky Archaeological Survey) and Mary Kwas (Arkansas Archaeological Survey), Rae organized the **Public Archaeology Interest Group Forum**. From this effort, Rae is working together with other members to create a formal committee dedicated to Public Archaeology within SEAC.

In December, center director met with Cathy Slusser (director of Manatee County Historical Resources Dept.) and Commissioner Michael Gallen (Manatee County Board of County Commission) and initiated discussion for the potential of establishing an **Historic Preservation Ordinance for Manatee County**. Slusser completed a draft of the ordinance in 2007 and submitted said draft to the county administrator and county attorney. Until now, the draft ordinance was shelved. Opportunity for its review has

recently come to light through inquiries by newly-elected Commissioner Gallen. Jeff assisted in the review and updating of the draft ordinance with Slusser and county attorneys. Slusser, with assistance from FPAN, is planning, pending backing and approval from county administrator, to further the discussion with the remaining county commissioners in the upcoming quarter. Ultimately, permission for the ordinance to appear before the entire board for vote is up to them. Our efforts will be focused on providing information to county commissioners that show the need for preservation and cost-benefit analysis for the ordinance to be placed on the board's agenda.

WCRC staff also participated this quarter in a public meeting and information session for the proposal for the shipwreck remains of **USS *Narcissus*** to become the newest **Florida Shipwreck Preserve**. Franklin Price, of the Bureau of Archaeological Research, coordinated the meeting with FPAN and the Florida Aquarium (FLAQ). FLAQ nominated the shipwreck to the preserve system. The nomination set into motion a process created to measure public interest and support for the proposal and seek stakeholder input. WCRC provided an information table and participated in the meeting as a member of an information panel organized to answer questions about the preserve process.

Center staff also completed the initial phase of archaeological survey in Driftwood, a historic neighborhood located in St. Petersburg. In the end, over 40 volunteers participated in the **Driftwood Community Archaeology Project**. See summary below.

Type of Activity/Event	# of Events/Presentations/Activities	Attendees #
Public Presentations	5	98
Public Events	4	822
Professional Presentations (conferences, etc)	1(SEAC)	20
Professional Events attended (conferences, etc)	3 (FCSS, FAME, SEAC)	-
Adult Training/Workshops	3 (FCSS, Sport Diver, Boy Scout Merit Badge Clinic); [2 attended (NAI, Social Media)]	125
School/Youth Programs/Workshops	12	1027
Radio/TV Presentations/Interviews	Bay News 9 – coverage of GPR demo at Samford Cemetery	-
Volunteer Programs	1 – (15 field days: Driftwood Community Archaeology Project)	16vols/130hrs

Meetings attended – Government, Schools, Admin	12	-
Printed Articles – Magazine, Newspaper	St Pete Times, Brandon extra: coverage of GPR work at Samford Cemetery	-
Printed Media produced – Brochures, Booklets, Guides, Maps	none	-
Electronic Media produced– Blog, Podcasts, Mass Emails	Blog/Twitter/Facebook posts on intermittent basis; no newsletter this quarter – new setup administered for newsletter from FPAN hq	-
Major Publications – Book, Chapter, Journal Article	none	-
<b>TOTAL</b>	<b>42</b>	<b>2092</b>

## Public Outreach

### Info Booths/Edu Activities

- Palma Sola Botanical Park annual plant fair ; *Manatee*
- Homeschooler Day at Tampa Bay History Center; *Hillsborough*
- GPR demo at Samford Cemetery cleanup; *Hillsborough*
- FL Dive Show; *Statewide*
- Florida Assoc of Media Educators; *Statewide*

### Public Lectures/Presentations/Tours

- FL Dive Show; *Statewide*
- USS *Narcissus* nomination to FL U/W Preserve; *Tampa Bay*
- Southwest Florida Archaeological Society; *Lee*
- North Tampa Library; *Hillsborough*
- History and Preservation Coalition of Sarasota County; *Sarasota*
- Public Archaeology Interest Group Forum; *SEAC*

### Workshops/Training

- Orientation to U/W Archaeology for Sport Divers; *Pinellas*
- Archaeology in the Classroom – FCSS; *Statewide*
- Boy Scout Merit Badge Clinic; *Pinellas*

### Youth Event/Presentation

- Thurgood Marshall Fundamental School; *Pinellas*
- Smith Middle School; *Hillsborough*
- Great American Teach-In; *5 schools in Hillsborough, Pinellas counties*
- Alonzo High School; *Hillsborough*
- Largo Middle School; *Pinellas*

- University of South Florida, Public Archaeology grad class; *Hillsborough*
- Rampello Downtown Partnership School; *Hillsborough*
- Tampa Bay History Center; *Hillsborough*

### Assisting/Advising Local Governments

#### Hillsborough County

- Cont. updates to Historical Resources Review Board (HRRB) of ongoing work to document Samford Cemetery and 3 other undocumented cemeteries.
- Cont. meetings with county staff and HRRB for update of county inventory to include recorded archaeological sites on public lands.

#### Pinellas County

- Cont. assistance with City of St. Petersburg Parks Dept on archaeological issues – at Maximo Park and other parks where archaeological remains present questions on best management procedures.
- Cont. assistance to City of St. Petersburg Historic Preservation staff with review of Certificates of Appropriateness in regards to proposed ground disturbing activities where landmarked archaeological sites are present.

#### Highlands County

- Cont. facilitation between Historic Preservation Commission and Highlands Hammock State Park for documentation of archaeological remains within park.

#### Sarasota County

- Ongoing collaboration with History and Preservation Coalition of Sarasota County with development of *Explore Sarasota's Past* tourism travel map.

#### Manatee County

- Assistance with review and endorsement of Historic Preservation Ordinance

### Assisting DHR

#### Local contact for DHR, BAR – (also FL State Parks, FL DEP)

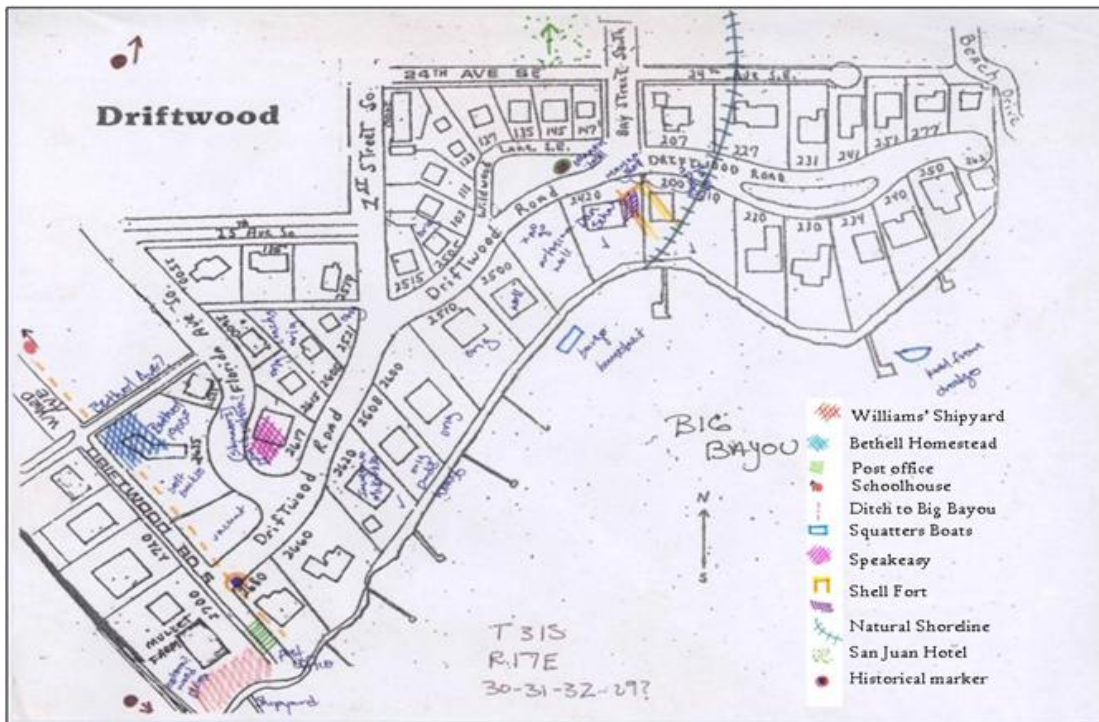
- Provide advice and liaison for Florida Master Site File submissions; delivered donated archaeological material to State Collections
- Distribute brochure and poster materials regarding Best Management Practices; State Underwater Archaeological Preserves; and whatever else we may have on hand.
- Conduct Orientation to U/W Archaeology for Sport Diver training – program created by BAR in 1992

- Respond to requests for assistance with management duties to document, protect, preserve cultural resources within state park lands – Lake Manatee State Park, Wingate Creek Tract for further documentation of Stanley Mound 8MA127; Ybor City Museum State Park; Highlands Hammock State Park

Other

- Director serves as a Board Member of Central Gulf Coast Archaeological Society – attend monthly meetings and participate in Board activities and decisions.
- Staff serves as Board Members of Alliance for Weedon Island Archaeological Research and Education – attend quarterly meetings and participate in Board activities and decisions.
- Staff attended National Assoc. of Interpreters Certified Interpreter Guide training.
- Staff attended social media workshop in St. Augustine – conducted by FPAN NE.

Driftwood Community Archaeology Project



Neighborhood Map of Driftwood. Map has been color-coded and labeled by neighbors based on their recollections and prior knowledge of historical activities in Driftwood. Mullet Farm at bottom left.

Between June and December 2010, FPAN staff, Driftwood neighbors, Central Gulf Coast Archaeological Society members, and volunteers completed the first phase of an exploratory shovel testing survey of the Driftwood neighborhood. In total, over 40 individuals assisted in the survey. Archaeologists concentrated efforts at the areas identified on the color-coded map provided by Driftwood residents (see figure above), and with volunteer help excavated over 140 shovel tests in 14 residential lots (see figure below).

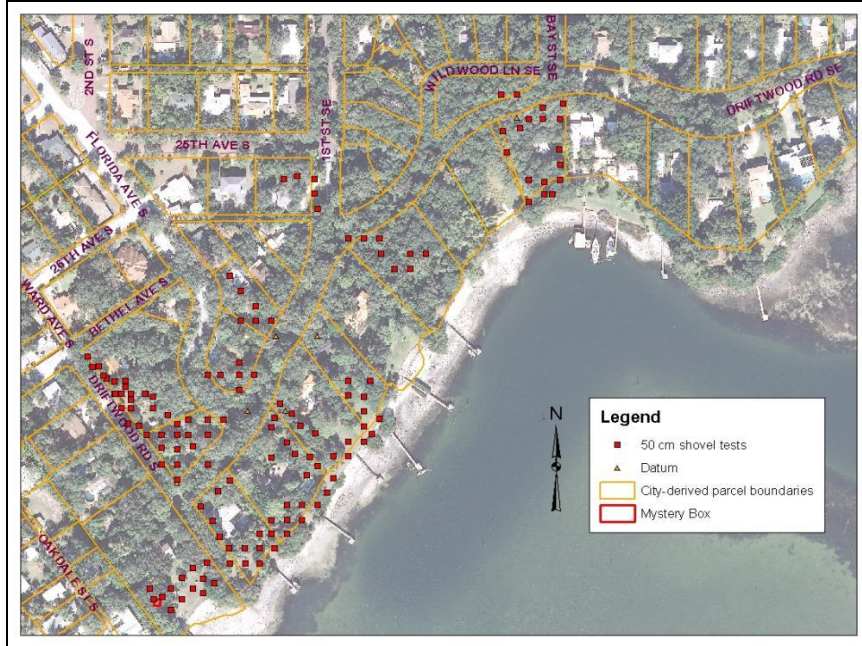
In Mullet Farm, we expanded the opening around the Mystery Box to roughly a 2m square unit and excavated to approximately 80cms to expose the top of the wooden structure (see figure below). The wood box is approximately 1.2m square and about the same measurement in depth. Diagnostic artifacts, a molded glass bead and a pharmaceutical bottle help to place the Mystery Box construction to around or sometime after 1900. Although it had most likely fallen out of use by the time of the Gandy's purchase of the property in 1921, it appears to be contemporaneous to the construction of Mullet Farm (1910). Excavation of the contents of the box may reveal more information toward these ends – and may point to its function – septic or cistern?

Outside of Mullet Farm and the Mystery Box, neighbors identified the possible locations of the late 1870s Bethell homestead, the Pinellas Village post office, and a 1920s speakeasy. In these areas, archaeologists and volunteers recovered evidence that may yield insight to the historic activities that took place here. Diagnostic glass fragments and ceramic pieces have been recovered throughout these portions of the neighborhood. In the coming months, lab analysis of the recovered items with other material remains and contextual information may help verify the locations put forth by the neighbors. During lab work this spring, we will continue to provide updates of our progress in deciphering these clues that will hopefully lead to new discoveries about the area.

With concern of the remains of Big Bayou's prehistoric occupants, residents pointed us toward the northeastern portion of the neighborhood where lies the "ruins of an old fortification made entirely of oyster and conch shells" (Bethell 50). Found by Miranda while clearing land and later written about by Bethell in his portrait of early settlement in the lower Pinellas peninsula, this land feature is evidence of a prehistoric occupation along Big Bayou. The remains are likely what archaeologist S.T. Walker noted in 1879 as "3 large shell middens." Goggin recorded the site in 1952 for the FMSF and appended the name Big Bayou Mounds, 8PI22.

30 years later, a local archaeologist tried to relocate the mounds (8PI22) but instead recorded them as completely destroyed. But, as personal collections of stone tools and visible marine shell at the bases of oak trees attest, remains of the Big Bayou Mounds are extant. Test pits revealed a 30+cm midden deposit comprised of various marine shell and faunal remains. Recovered artifacts date the remains (most likely) to a late woodland period occupation. Further refinement is a future goal for archaeology in Driftwood.





Driftwood Shovel Test Locations.



Top of Mystery Box, Unit 1, Mullet Farm.